



AuSable Valley Snow Groomers, Inc.

110 Miles of Snowmobile Trails Snowmobile trail reports for the Mio, Luzerne & McKinley areas. 2930 W. Cherry Creek Rd ...

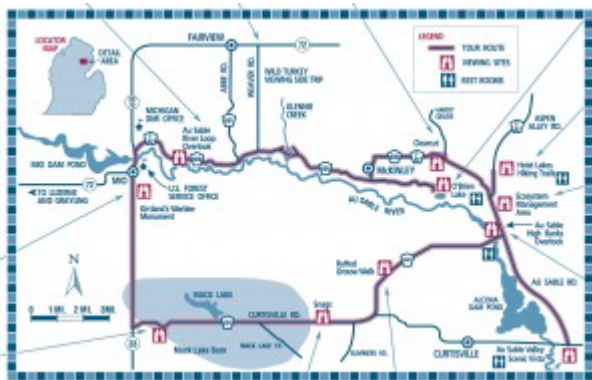
[Read More](#)



GeoCaching

Geocaching is a high tech version of hide-and-seek that combines the fun of scavenger hunts, hiking, and "treasure" exchanges. It ...

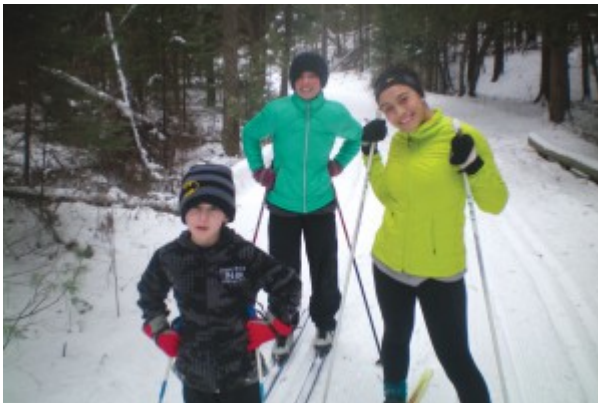
[Read More](#)



Jack Pine Wildlife Viewing Tour

Drive the Jack Pine Wildlife Viewing Tour. This 58-mile self-guided tour will take you through the scenic Au Sable River ...

[Read More](#)



Loud Creek Skiing & Hiking Trail

[Click here to open PDF file of Loud Creek Map ...](#)

[Read More](#)



Luzerne Boardwalk

Luzerne Boardwalk winds through an old growth cedar swamp along the bottom lands of the East Branch of Big Creek, ...

[Read More](#)



Michigan Trail Riders Association, Inc.

The Michigan Trail Riders Association was created in 1963 with the enthusiasm of a few horseback riders who wanted to ...

[Read More](#)



Midland to Mackinac Pathway

A trail which crosses through Oscoda County is the Midland to Mackinac Pathway. This trail runs in a north/south direction ...

[Read More](#)

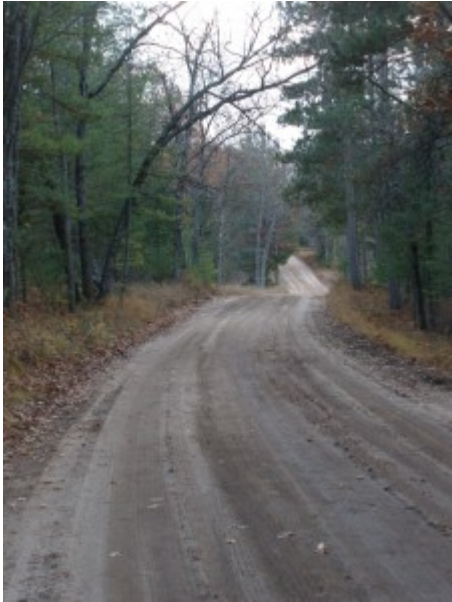


Northern Power Sports of Mio, Inc.

30 E. Kneeland Rd. Mio, MI 48647 Phone: (989)-826-3388 Fax: (989) 826-1372 Email

Northern Power Sports of Mio is a ...

[Read More](#)



ORV Trails

OPERATOR RESPONSIBILITIES Obtain Motor Vehicle Use Map (MVUM) Operating a motor vehicle on National Forest System roads, trails, and in ...

[Read More](#)



Shore to Shore Hiking & Horse Trail

Luzerne Trail Camp The Hiking and Horse Trail is a Shore-to-Shore marked trail, from Lake Huron at Oscoda to Lake ...

[Read More](#)



Timberland Quilt Trail

Economic Development Alliance for Oscoda County, Oscoda County Art Council. P.O. Box 777 Mio, Michigan 48647 www.timberlandquilttrail.org Timberland Quilt Trail ...

[Read More](#)



Wolf Creek Hiking and Cross-Country Ski Trail

In 2012 the Wolf Creek Trail system was re-established in the Huron-Manistee National Forests. This newly designated 4.8 mile non-motorized ...

[Read More](#)